

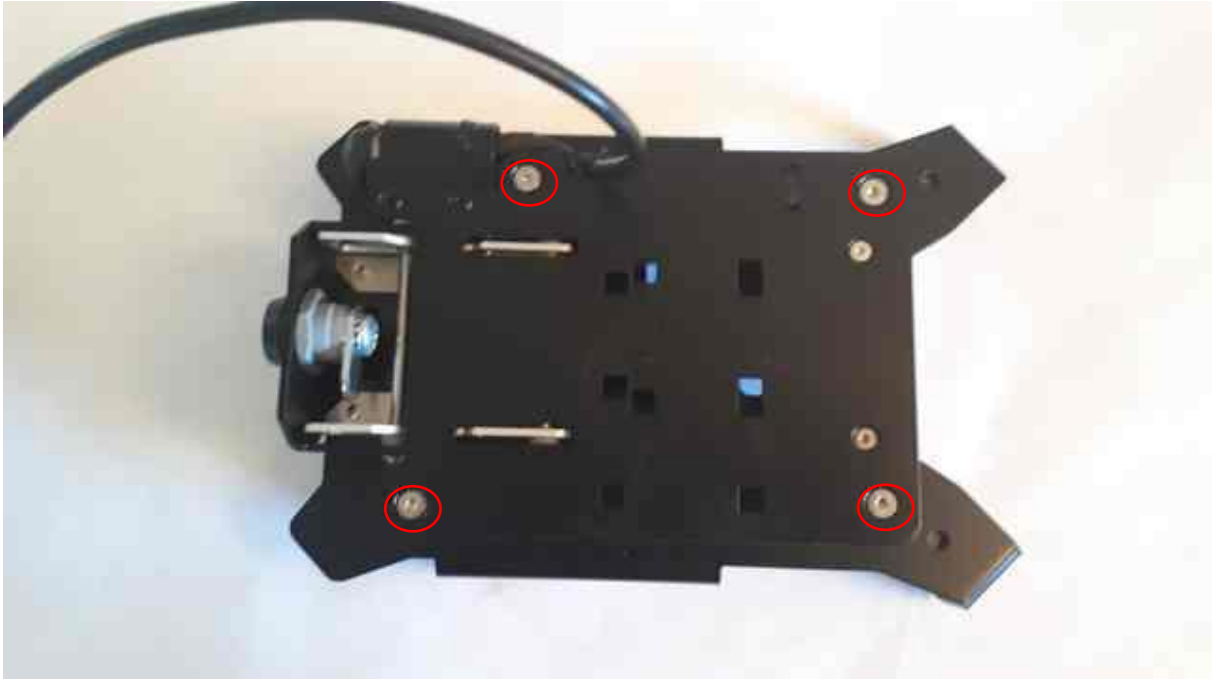
Carpe Iter ***navigating from behind handlebars redefined***

Installation instructions for AMPS base and long bracket

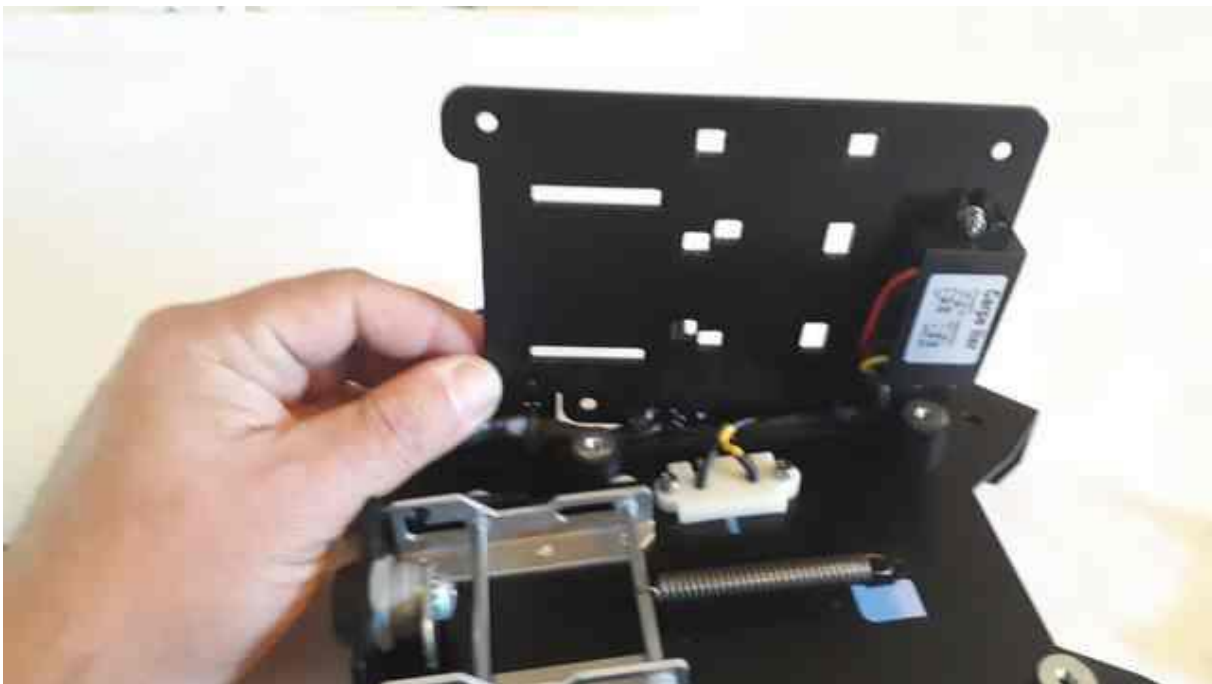
Required tools (not included): Allen key 2,5mm and 4mm, wrench 10mm

Screws and nuts tighten clockwise, loosen counter-clockwise

1. Remove 4 screws on the rear side of the CI Holder – Allen key 2,5mm



2. Flip the rear side of the CI Holder upwards



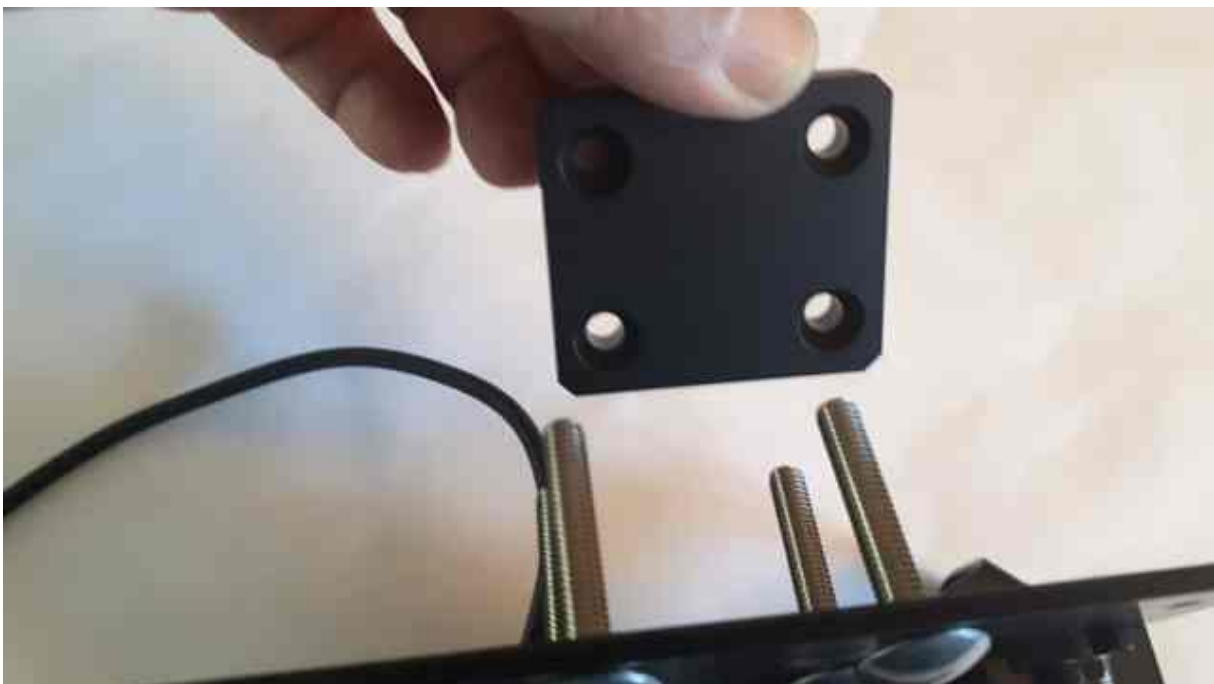
3. Place the carriage bolts (provided) in the cut-outs. For installation on bikes without windscreen, we recommend to choose the position furthest from the bottom side of the CI Holder (as shown)

Carpe Iter ***navigating from behind handlebars redefined***

on the picture), to protect the CI Holder and CI Pad against impacts, debris and stones flying off the bikes in front of you.



4. Place section of the AMPS base with recessed holes on the bolts, with the recess facing the rear side of the CI Holder.



Carpe Iter ***navigating from behind handlebars redefined***

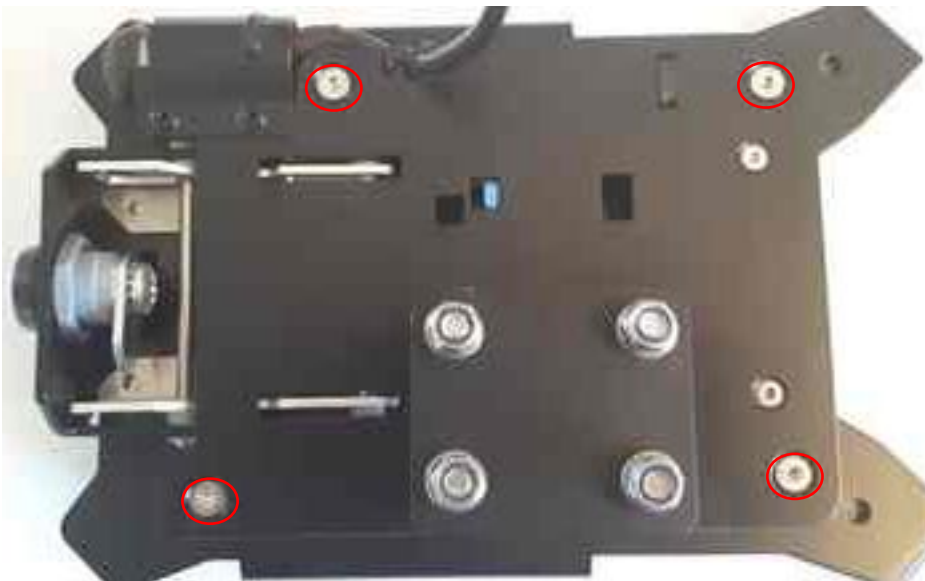
5. Place the other section of the AMPS base on the bolts, than washers and nuts. Tighten the nuts by hand only at this stage.



6. Tighten nuts with 10mm wrench slightly, to leave a gap between the two sections of the AMPS base of approx. 2mm

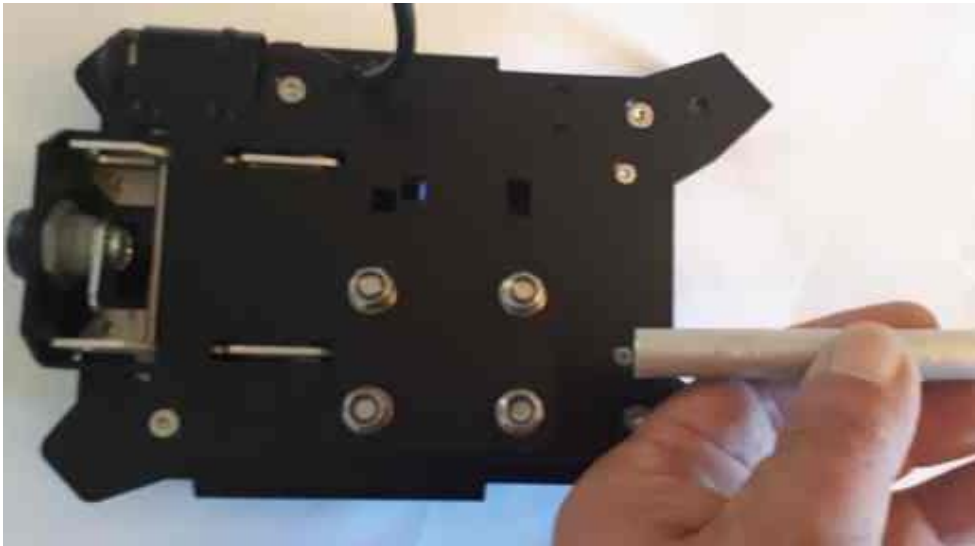


7. Please the rear part of the CI Holder back and reinstall the screws – Allen wrench 2,5mm. Do not overtighten, max 3Nm

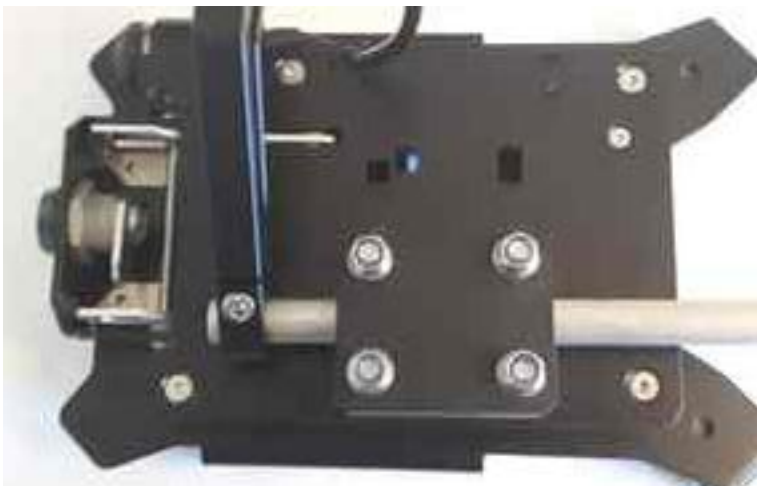


Carpe Iter ***navigating from behind handlebars redefined***

8. Push the bracket rod between the sections of the AMPS base in the directions as shown on the picture



9. Please one arm of the bracket on the rod (do not forget to loosen the bolts in the arm – Allen wrench 4mm)



10. Place the rod and bracket arm in relation to the holder jaw as shown on the picture



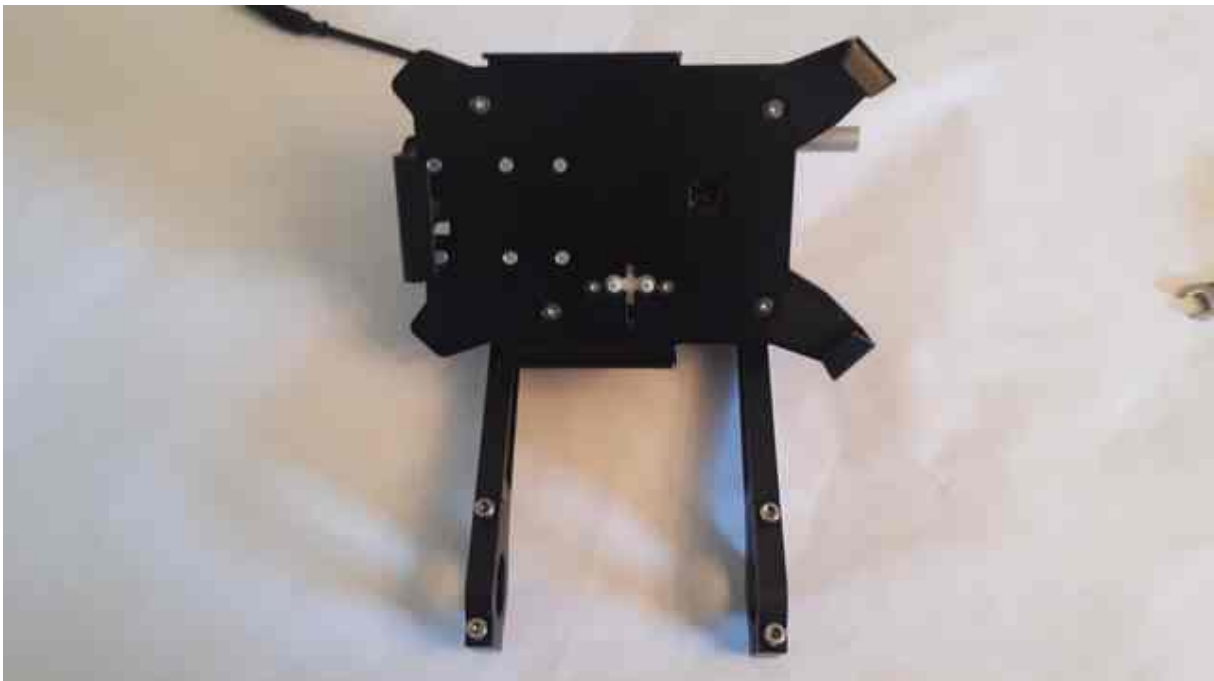
Carpe Iter ***navigating from behind handlebars redefined***

11. Place the other bracket arm



12. Tighten the AMPS base bolts (wrench 10mm), no need to overtighten, approx 10Nm should be enough). It is possible to fully tighten also later, once already place on the bike

13. Leave the bracket arms loose on the rod (do not tighten the bolts securing the rod)



Carpe Iter ***navigating from behind handlebars redefined***

14. Remove clamps from bracket arms – Allen key 4mm



15. Please the whole assembly on the handlebars – bracket arms outside the handlebar clamps. Move the bracket arms on the rod as required, to place the arms as close to the clamps as possible



Carpe Iter ***navigating from behind handlebars redefined***

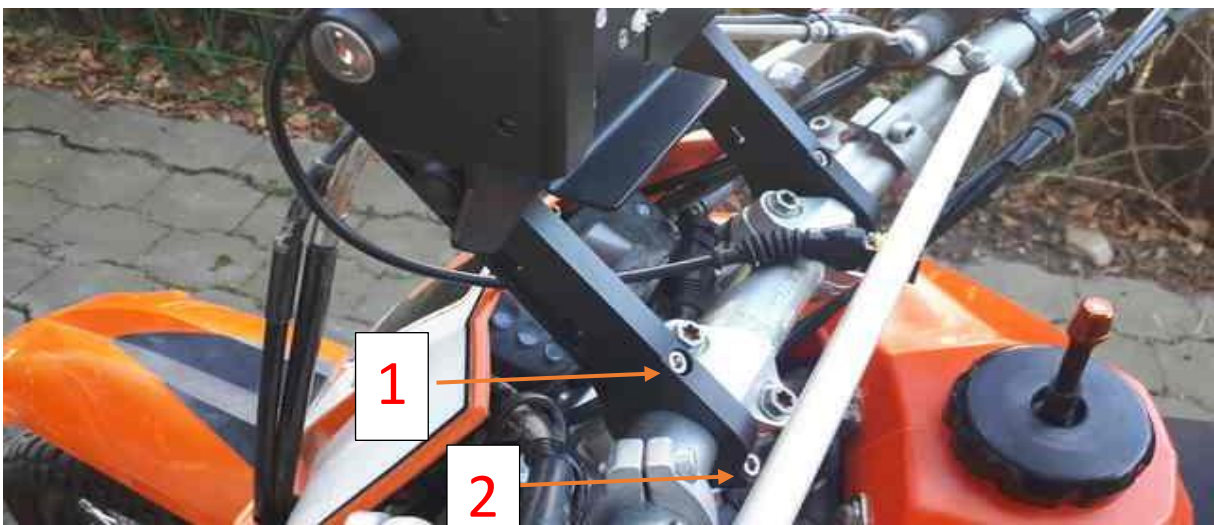
16. Place the bracket clamps and the upper bolts (further away from handlebars) – screw the bolts in just a few turns, do not tighten, yet



17. Place the lower bolts and screw in by a few turns



18. Reposition (if required) the bracket arms, in order that they are as close to the handlebar clamps as possible. Make sure the bracket arms are parallel (move them on the rod a little, if necessary) and tighten upper bolts on the clamps (further away from the handlebars).). Adjust the angle (height) of the bracket as desired and tighten the lower bolts. Do not overtighten (approx. 7Nm, if you find the bracket moves after riding, add a little torque – every handlebars are a little different both in diameter and shape).



Carpe Iter ***navigating from behind handlebars redefined***

19. Adjust the CI Holder angle as desired, fasten the bolts securing the rod – Allen key 4mm. Do not overtighten (7Nm should be quite enough)



20. Secure the CI Holder cable on one of the bracket arms by zip ties.



Carpe Iter ***navigating from behind handlebars redefined***

21. Connect the CI Holder cables



Finished :-)

After a few first kilometers of riding check all bolts, tighten as required – especially the bracket arm clamps might get seated and bolts will come loose